



RantCell Enterprise 6.8 Features



Edition: May 2020

Version: 1.0

Website: <https://www.rantcell.com>

Email: support@rantcell.com



Introduction:

The purpose of this document is to provide brief information about new features that will be available on RantCell Pro enterprise 6.8 software version.

RantCell dashboard version: v7.2.2

RantCell app version: v6.2.4.17

RantCell Pro enterprise v6.8 new features.

Feature ID 1001 Call Rejection App side only:

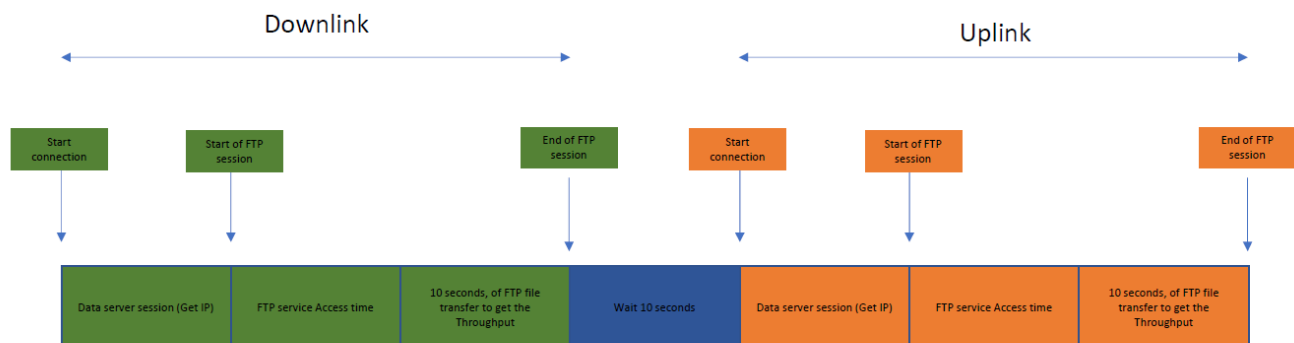
In app under settings section an option has been introduced on app side to reject any incoming calls while call test is executing on A party number. This has been introduced for those customers who are using RantCell app phone for personal use, they tend to answer incoming calls while tests are running which is leading wrong call setup time measurement on app side. It is recommended set this flag to true.

Feature ID 1002 DET and FSA measurement for FTP tests:

A timer has been introduced for FTP sessions i.e. user can configure a definite time between 10 to 100 secs for a very large file download or upload. Instead of computing the average for entire size of the test file transfer, users can now define time. This is specifically useful when benchmarking and comparing various service providers data throughput performance. Following parameter measurements are introduced in this version.

Data connection Establishment time (DET): Time taken by network to establish connection to FTP server from device, i.e. time measured between start of session to authentication response code by FTP server to client.

FTP Service Access Time (ms): Time duration that is configured by user to allow for FTP file download or upload over network. Upload and download throughputs of network are recorded during this timed data transfer.

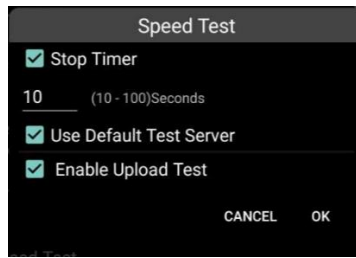


Downlink report values:

- Data connection establishment time(ms)
- FTP service Access Time (ms)
- Data Application Throughput DL (kbps)
- Data Application Throughput DL (Mbps)

Uplink report values:

- Data connection establishment time(ms)
- FTP service Access Time (ms)
- Data Application Throughput UL (kbps)
- Data Application Throughput UL (Mbps)

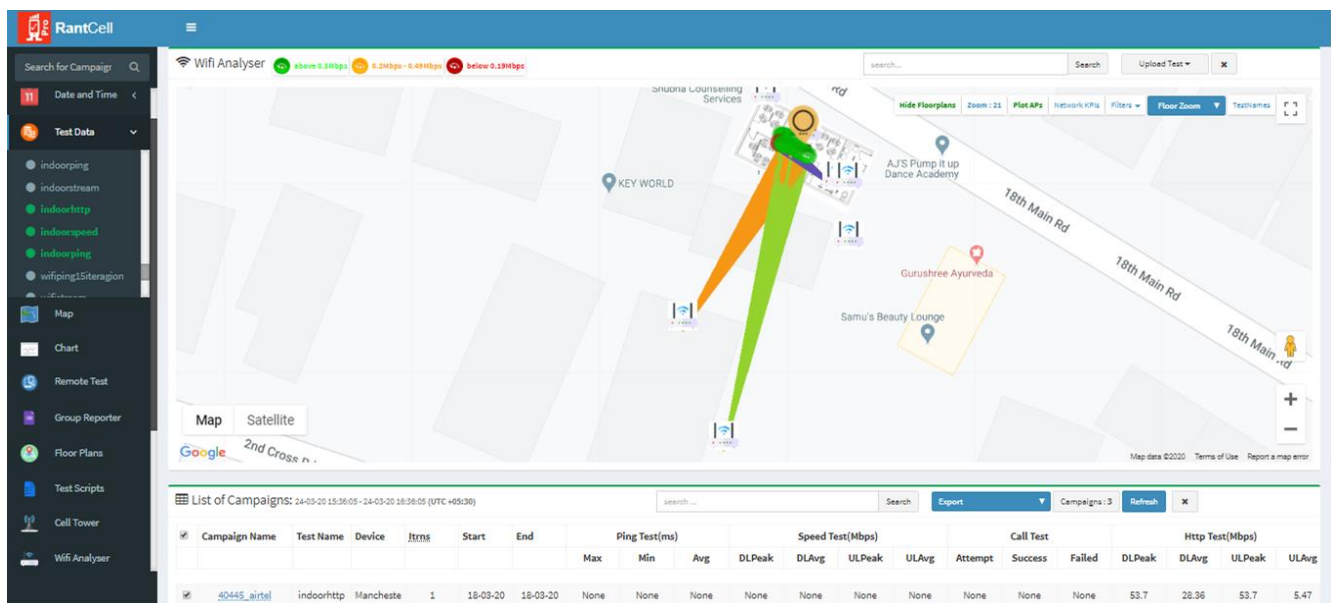


Illustration

Feature ID 1003: Wi-Fi Analyser solution (Available on corporate plans only)

Support for Indoor and outdoor Wi-Fi testing using RantCell app. App UI shows Wi-Fi parameters measurement in real time whenever smart phone is connected to Wi-Fi network. Floorplan based Wi-Fi testing is also enabled in this version. App supports export of Wi-Fi test results in CSV format with share option, plus test data is uploaded into RantCell cloud in real time. Feature supports separate dashboard view “Wi-Fi analyser” is implemented to analyse Wi-Fi test data. Users can also load indoor and outdoor Wi-Fi Access Points (AP) GPS positions to measure coverage provided by each AP.

Tests supported	Parameters Measured
FTP Speed test	Wi-Fi SSID
HTTP throughput test	Wi-Fi BSSID
Latency (Ping)	Wi-Fi RSSI
Video testing	Wi-Fi Frequency
Floor plan survey (Idle Mode)	Wi-Fi Link-Speed
Floor plan based active testing (all above data tests)	Wi-Fi AP (meters) on App only
	Wi-Fi AP coverage view on maps

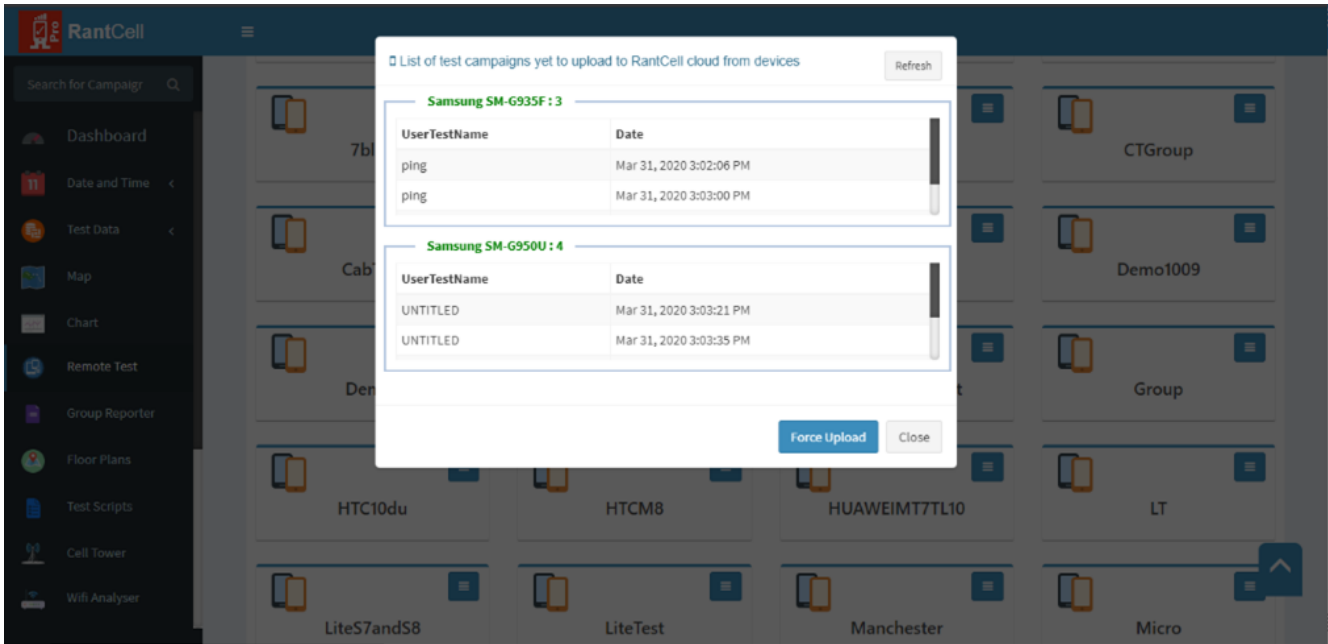




Feature ID 1004: Force upload

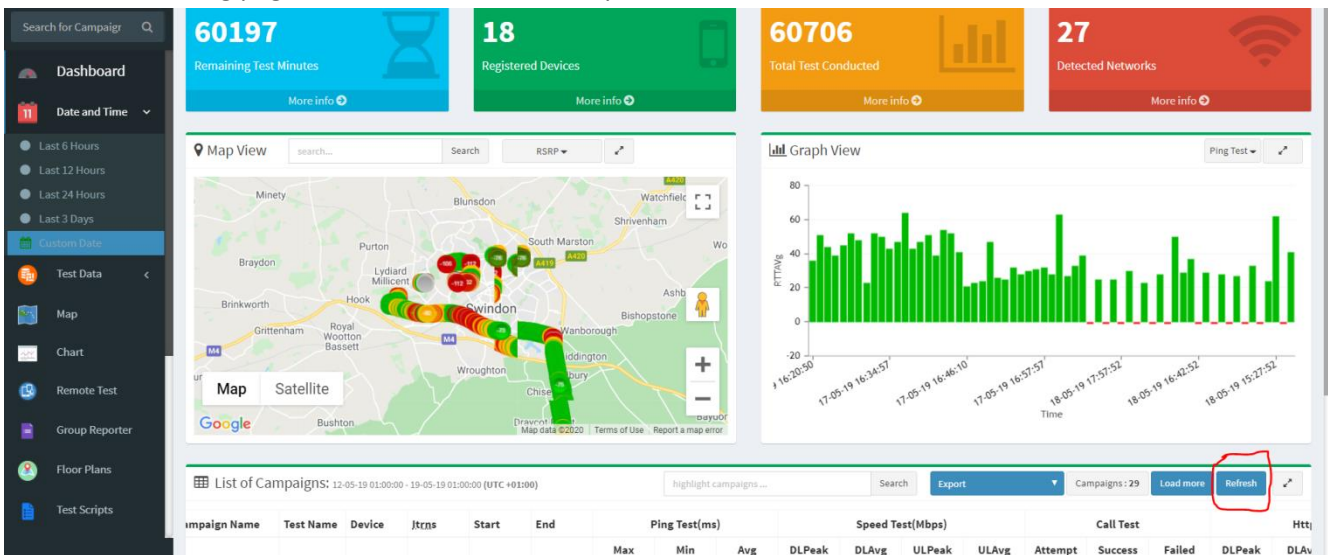
Feature has been introduced for force uploading test campaign data from remote devices. In some cases when data connectivity is poor at remotely located RantCell installed smart phones, test campaign data might take longer time to upload to RantCell server. Force upload feature has been introduced under remote test function in dashboard for user to trigger force upload for one or more devices under test group.

Example below: Two devices showing list of test campaigns that are yet to be uploaded to RantCell cloud. User can trigger command to upload test campaign data from remote devices by pressing Force Upload button as shown below.



Feature ID 1005: Refresh button

Refresh button introduced to load any new incoming tests, this is to avoid reload of entire dashboard. This is available in landing page and as well as in other expanded views.





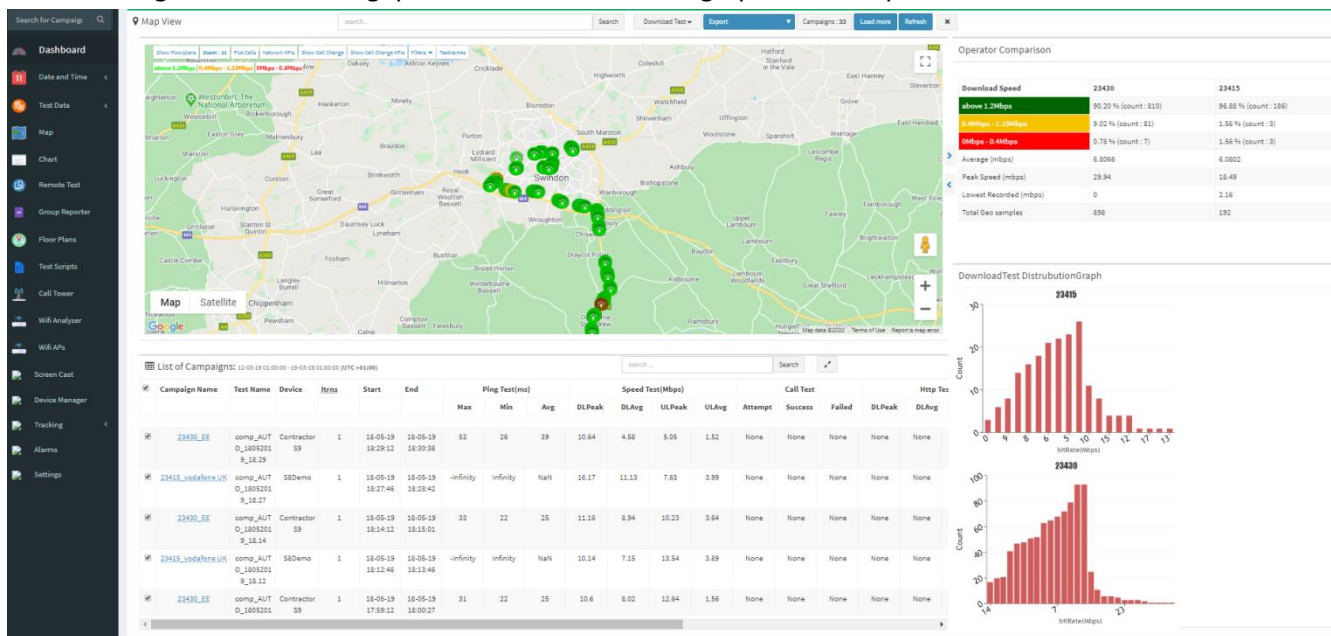
Feature ID 1006: Software update via app notification.

Users to receive notification on apps when new version of RantCell pro app is available. Users can click on dialog box to update software as and when they are available by RantCell support team.

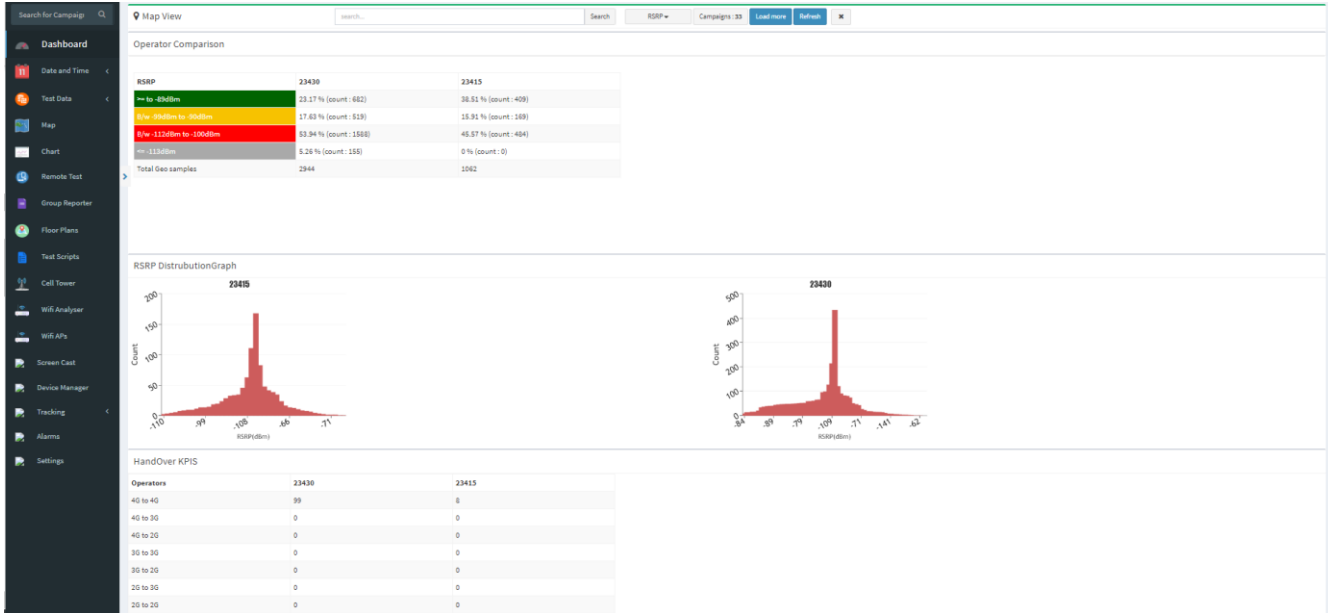
Feature ID 1007: Network Quality KPI Comparison tool (NQC)

This is an enhanced version Network Quality KPI feature , shows a high level KPI data in form of table and distribution graphs of selected list of test campaigns in the dashboard view either by doing data and time query or by selection of tests from individual tests from devices tree. This feature is useful during QoE comparison between various operators (Carriers). Supports up to 4 carriers to be compared side by side. All types of tests are supported in NQC.

NQC showing download throughput data and distribution graph for two operators.

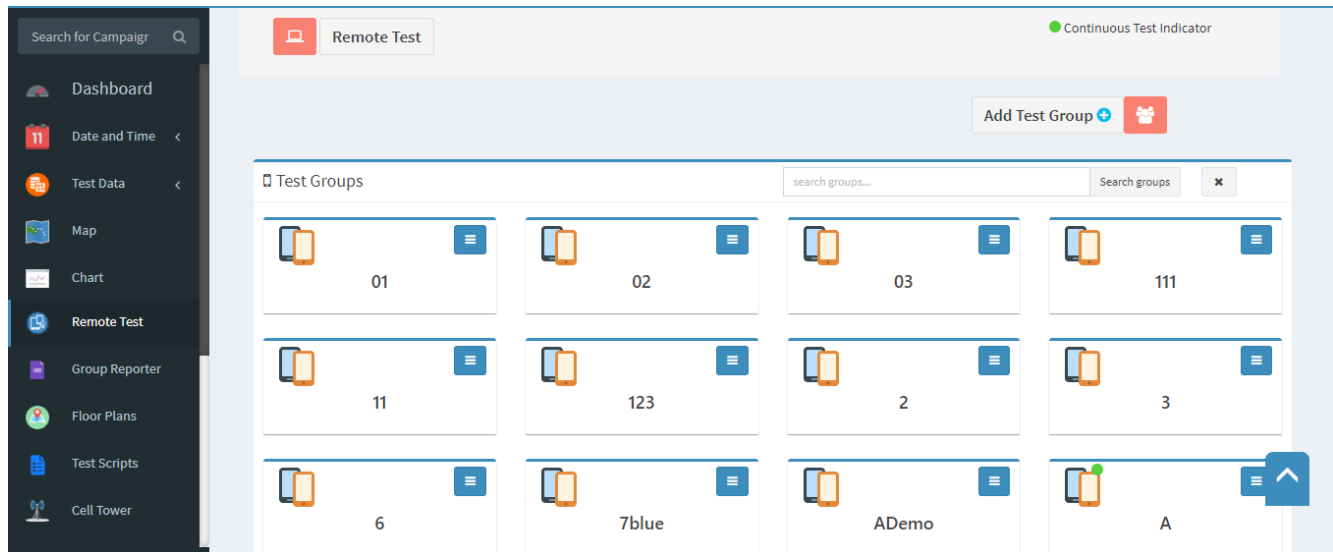


NQC showing RSRP distribution graph for two operators.



Feature ID 1008: Improvements in remote test UI and continuous test beacon indicator

Green beacon indicator for Test Groups which are enabled with Continuous tests.



Release info :

- Support for Android 10 above version of smart phones
- General UI enhancements and maintenance fixes on RantCell cloud server (7.2.2)
- General UI enhancements and maintenance fixes on RantCell app (v6.2.4.17)