

RantCell Pro v10.5.5 Features



Edition: May 2021

Version: v10.5.5

Website: <https://www.rantcell.com>

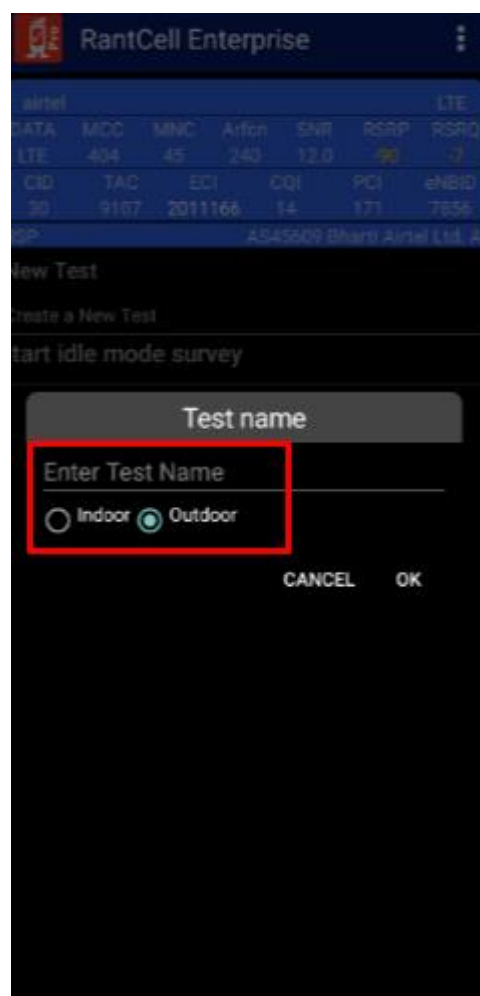
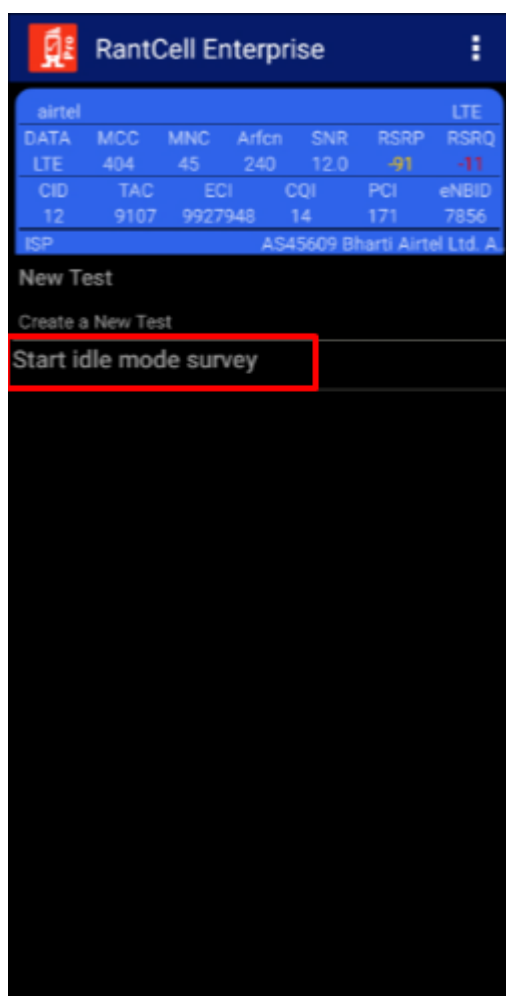
Email: support@rantcell.com

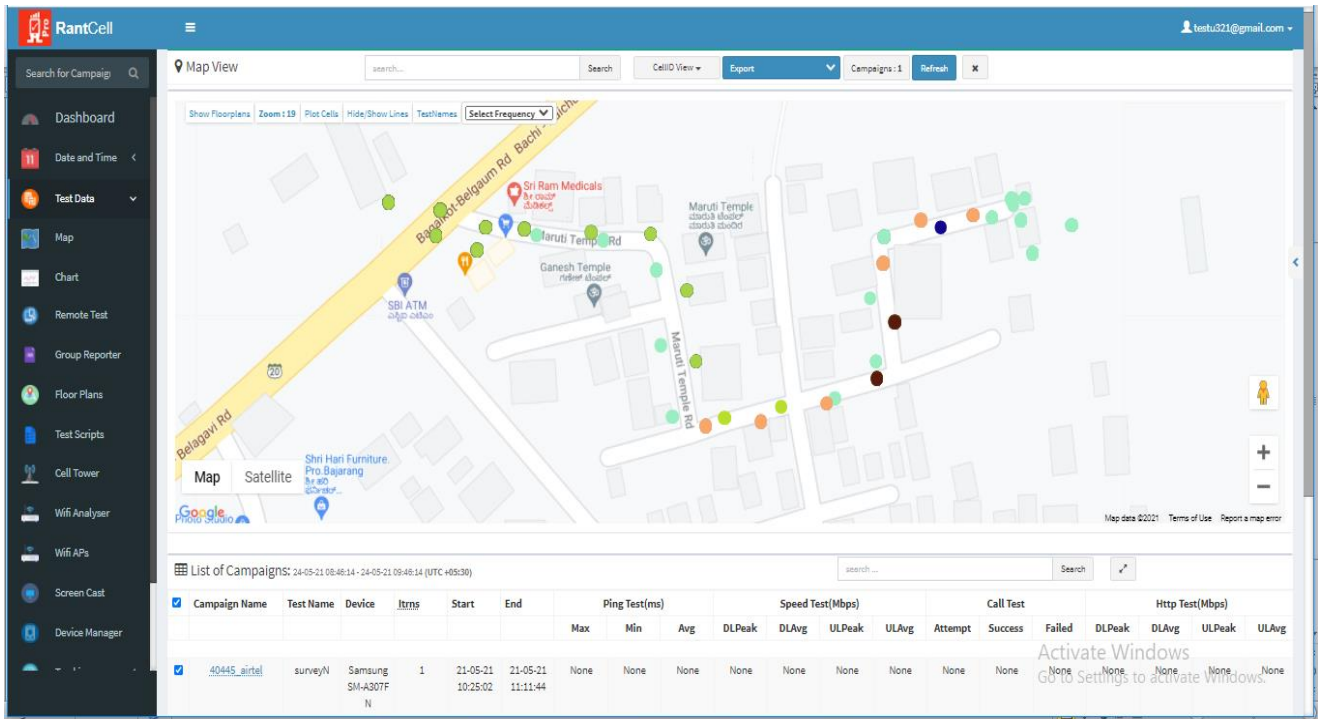
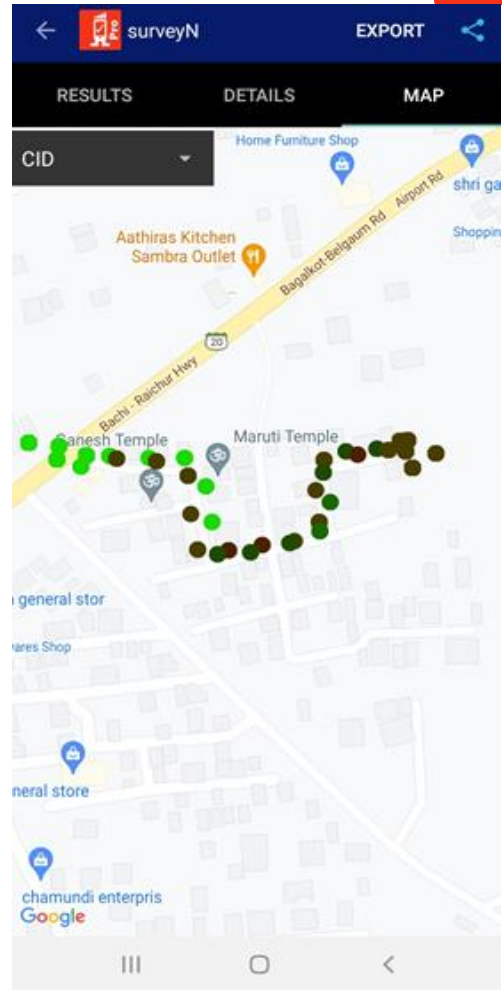
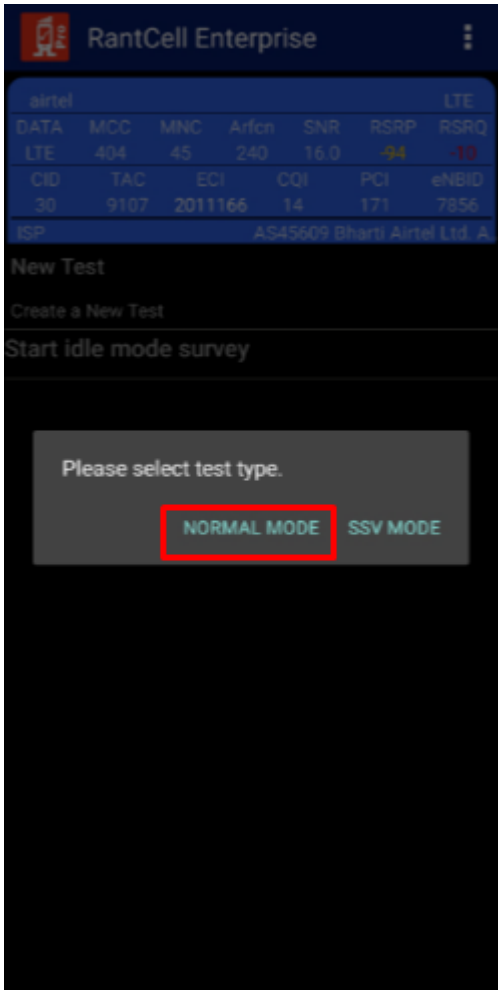
Introduction:

The purpose of this document is to provide brief information about new features that will be available on RantCell Pro app enterprise: v7.1.17
RantCell server and dashboard version: v10.5.5

Feature ID 1038: Outdoor idle survey (Drive test in idle mode)

Idle more survey (i.e. with no active tests running) feature has been introduced in latest version on RantCell pro with maps interface to support idle mode walk tests or drive test use cases on 2G/3G/4G/5G networks. Users can view the dynamic Google map while performing walk test or drive test. Support for visualization and analysis of survey data on RantCell pro app and for RantCell dashboard are as shown.

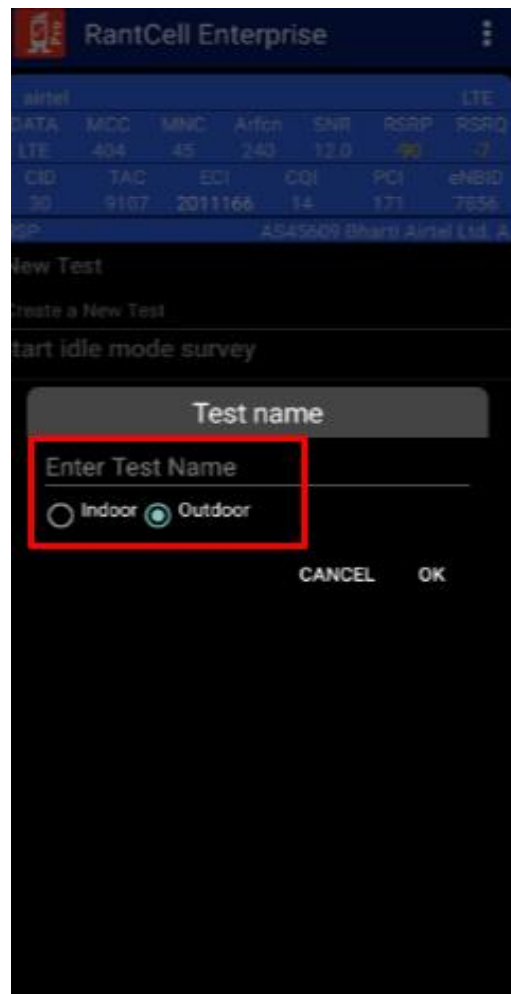
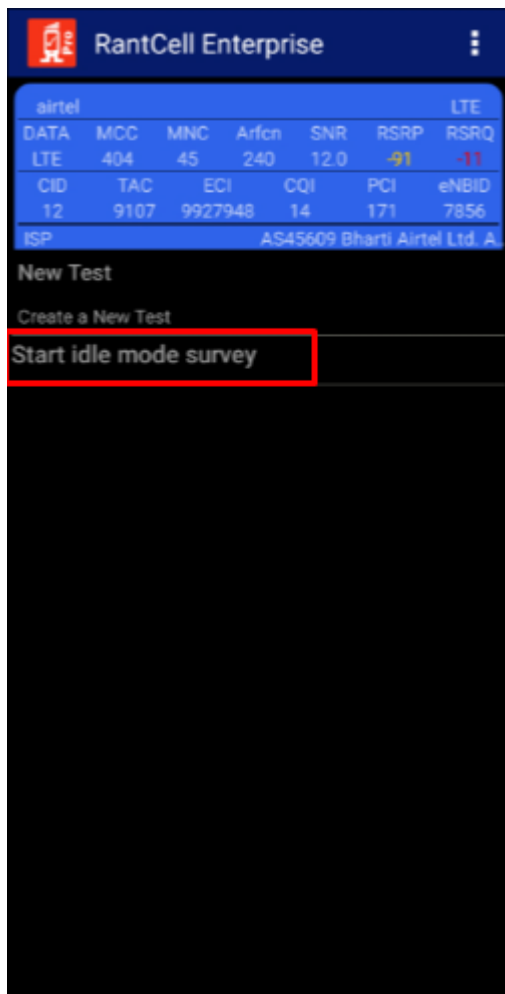


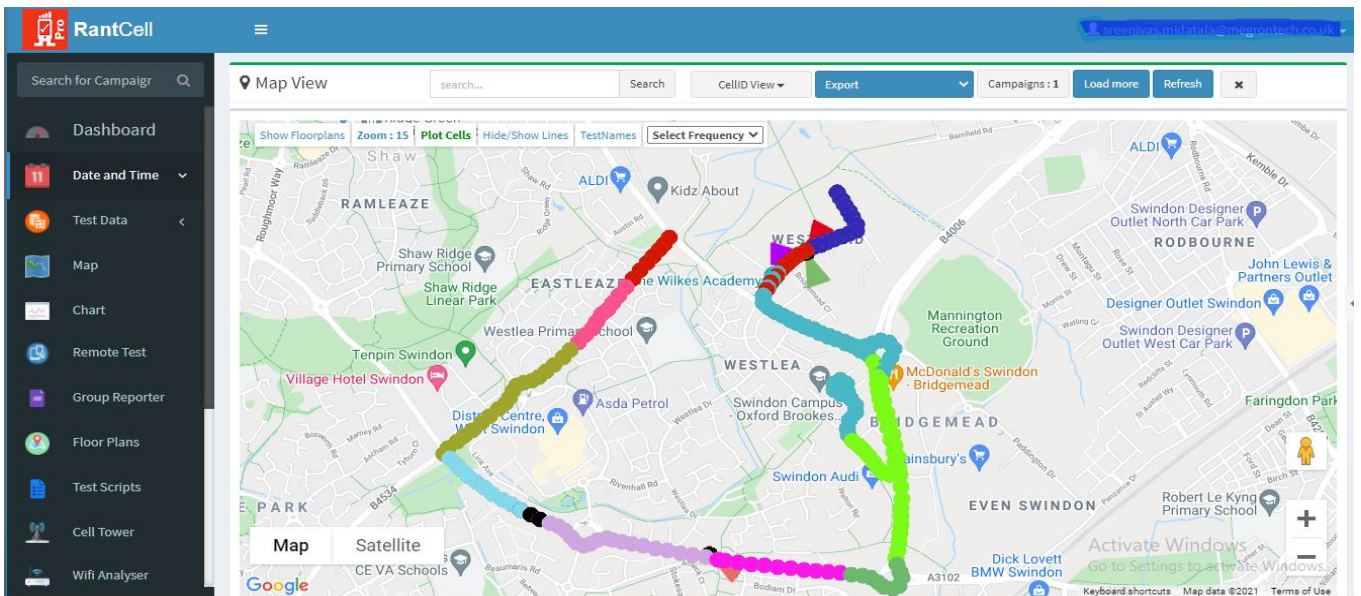
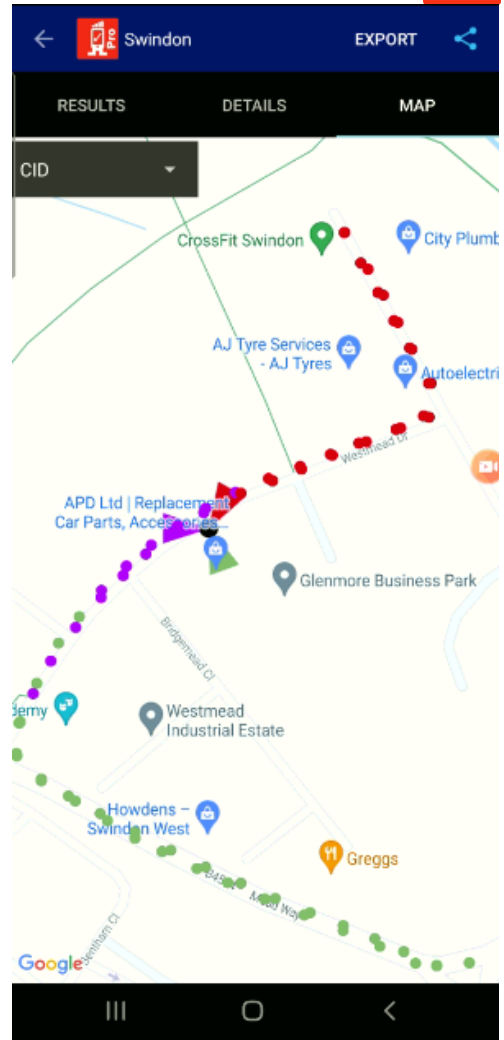
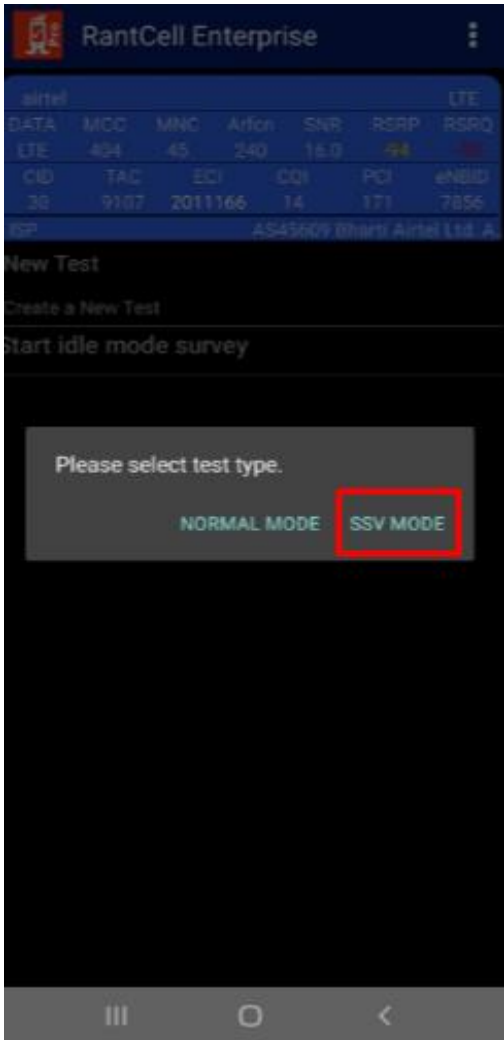




Feature ID 1039: Outdoor idle mode survey with SSV (Single site verification) mode test.

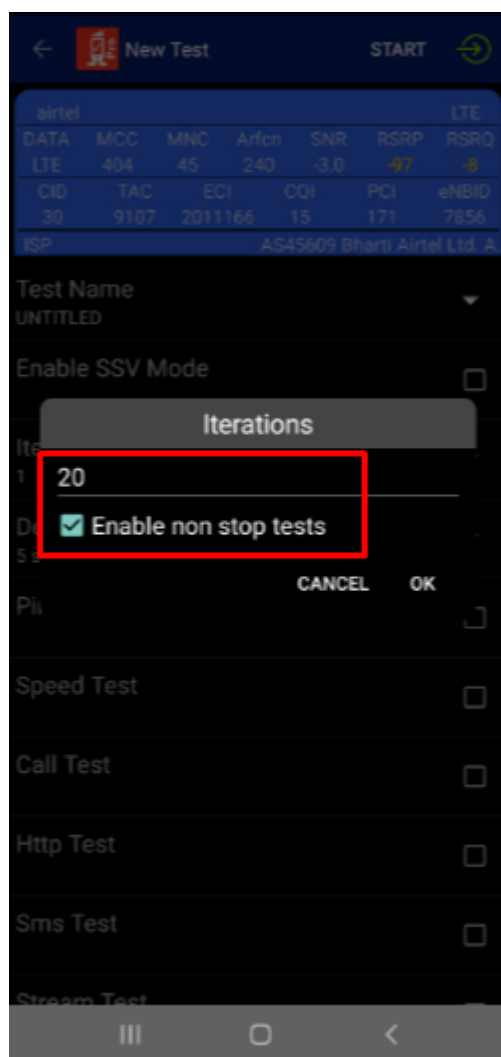
This feature is extension of Outdoor idle mode Outdoor idle survey, supports Single Site Verification by idle mode test for 2G,3G,4G base stations. Drive or walk survey SSV mode test on a particular site by adding the cell tower details in dashboard. Support for visualization and analysis of survey test data on app and dashboard are as shown below.





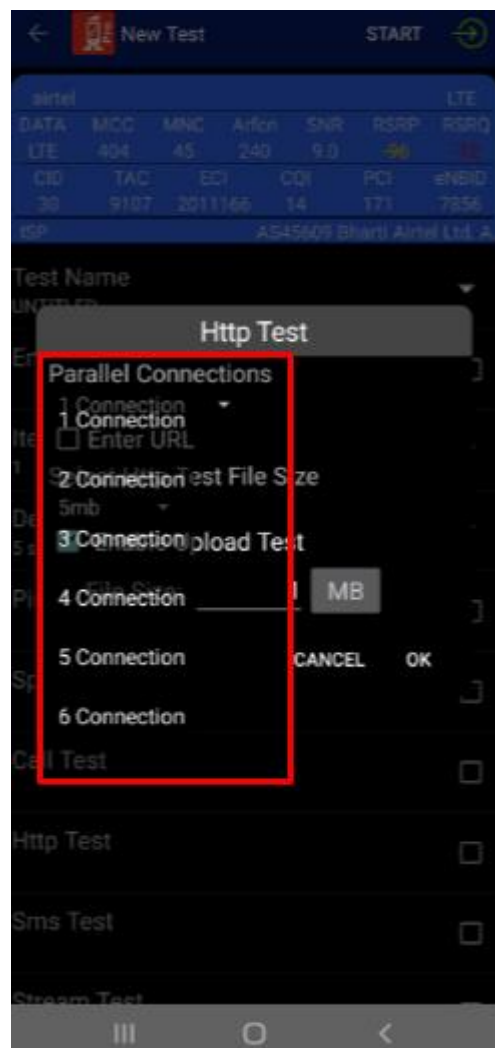
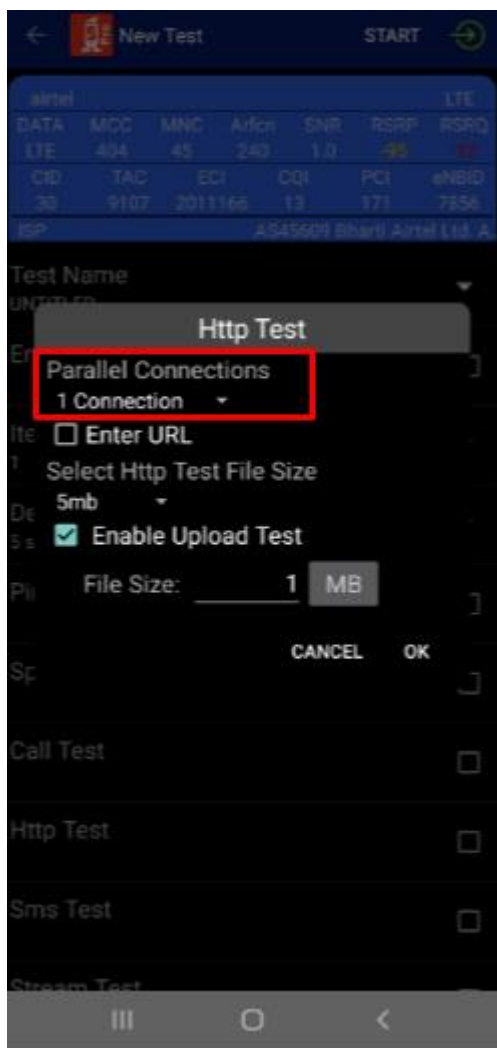
Feature ID 1040: Non-stop test improvement.


Non-stop test iteration limit has been introduced in app for user to perform nonstop test. By default, it is set to 20 iterations. This is to improve app and server performance during long drive (in excess of 2hrs) test use cases.



Feature ID 1041: Parallel connection for HTTP test.

Parallel connections for HTTP test have been introduced in RantCell pro app to measure large bandwidth networks such as 5G, this option will open multiple TCP/IP sessions with same destination HTTP test server. This feature is also enabled on RantCell dashboard while creating remote test configuration.



←  (1/1) 6connectionhttp TESTING ×

airtel							LTE
DATA	MCC	MNC	Arfcn	SNR	RSRP	RSRQ	
LTE	404	45	240	4.0	-93	-12	
CID	TAC	ECI	COI	PCI	eNBID		
30	9107	2011166	12	171	7856		
ISP							AS45609 Bharti Airtel Ltd. A

^ Http Test

Download

Url: <http://52.74.65.50:5551/5mb.txt>

Current: 8.689 Mbps
Average: 5.347 Mbps
Peak: 13.719 Mbps

HTTP DL Result: OK



Status 1: Done
Status 2: Done
Status 3: Done
Status 4: Done
Status 5: Done
Status 6: Done


Upload

Url: <http://52.74.65.50:5551/upload>

Current: 2.166 Mbps
Average: 2.601 Mbps
Peak: 3.353 Mbps

HTTP UL Result:

Status 1:  10 %
Status 2:  10 %

←  6connectionhttp EXPORT

airtel							LTE
DATA	MCC	MNC	Arfcn	SNR	RSRP	RSRQ	
LTE	404	45	240	6.0	-100	-13	
CID	TAC	ECI	COI	PCI	eNBID		
30	9107	2011166	13	171	7856		
ISP							AS45609 Bharti Airtel Ltd. A

RESULTS DETAILS

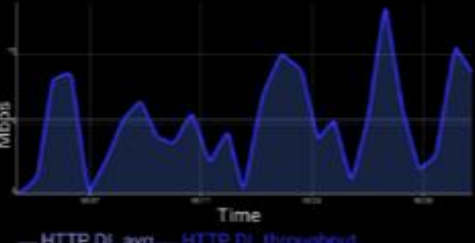
^ Http Test

Download

Url: <http://52.74.65.50:5551/5mb.txt>

Average: ↓ 5.34 Mbps
Peak: ↓ 13.72 Mbps

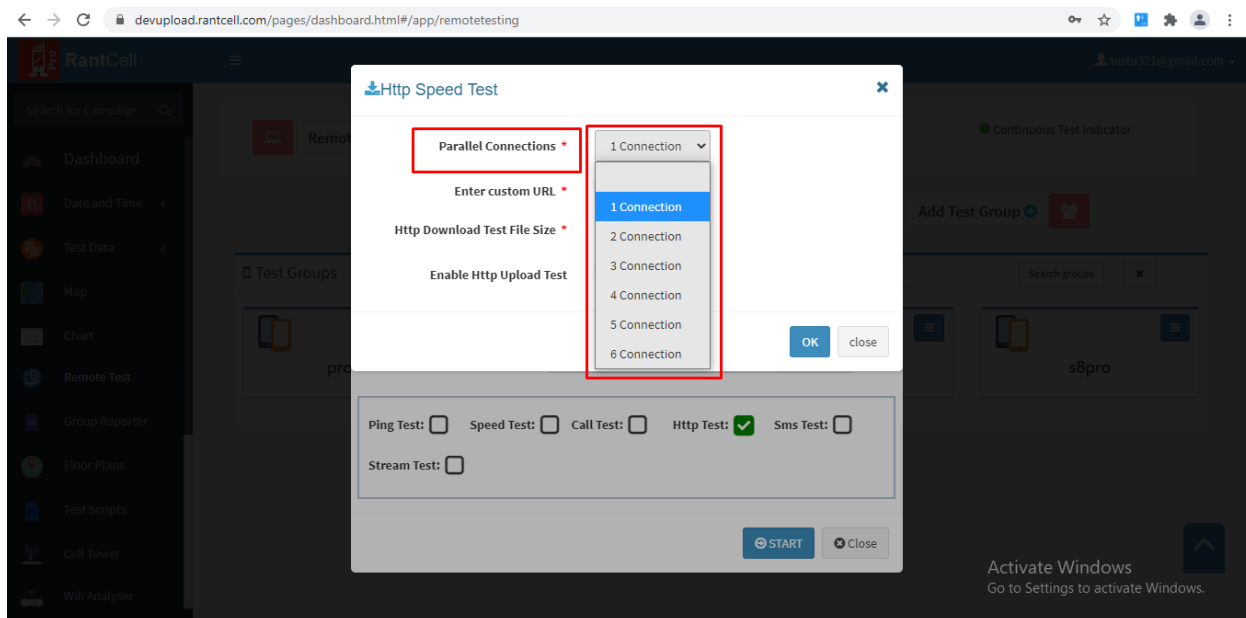
File Size: 5 MB x 6
Iterations: 1



Upload

Url: <http://52.74.65.50:5551/upload>

Average: ↑ 2.38 Mbps
Peak: ↑ 6.40 Mbps



Feature ID 1043: 5G Indoor floor plan-based survey tests.

5G related parameters capture such as NR signal levels have been implemented during indoor floor plan-based survey.